

Frontier F600 Man-portable Core Drill Rig



FRONTIER F600

Man-portable Drill Rig

OVERVIEW:

The F600 drill is the medium model of the AMMECO™ Frontier series of man-portable drilling rigs. This drill is modular design and made of high-strength aluminum materials, which ensure high standards of toughness while greatly reduce the weight of rig. The max component weighs 160kg, which is convenient for human transportation.

The drill's compact structures make sure that it can be assembled within the 4mx4m platform and dismantled easily in the field. With optimized designing, the F600 drill can be disassembled in 45mins and re-positioned in a half shift.

When road-access is limited, the drill can be handled along the small trails by manpower. This gives the drill outstanding advantages in a variety of complex terrain conditions.

FEATURES:

- The high-level of flexibility and productivity has made this type of drills efficient for applications in many mountainous regions in Africa, Asia, South America, Central America, the Mid East, and the Caribbean.
- The F600 drill adopts energy-saving and noise-reduction techniques. It is not only allows the operator to feel comfortable, but also can reduce the interference on the surrounding environment. F600 drilling rig can be easily handled by manpower and no roads will be needed. As footprints traces are limited and restoration of the environment is relatively simple, the influence on the natural environment is very small.
- With AMMECO TW series of thin-wall drill rods, the F600 drill can give full performance to the advantages offering increased drilling efficiency, larger core diameters, and higher recovery rate.
- The drill head is compact, top-drive and lightweight design. With the use of high and low speed hydraulic motors, the head is suitable for variable drilling conditions and reliable to deal with different torque need.
- The Rod holder is bidirectional hydraulic drive, fast clamping response, lightweight and flexible.
- The Water swivel is compact design, coaxial jet offering high wear resistant and smooth operation.

Depth capacity

BTW	600m
NTW	400m
HTW	220m

Drilling capacity is subject to drilling application and operation experience.

Drill frame

Weight	318 KG (Heaviest unit 160kg)
LxWxH (working status)	2743x502x5283 mm
Promote capacity	55 KN
Applicable of drilling rod	diameter 54mm - 114mm

Power unit

Power	Kobuta 1105T, 3x32HP
Weight	159 KG/unit
LxWxH	876x610x940 mm

Control panel

Weight	82KG
LxWxH	508x762x10163 mm
Instrument	hydraulic system, drilling operation
Operation control	feeding, drilling, clamping, rope, rinse

Hydraulic Tank

Capacity	45 L, water cooling
Weight	144 KG (Empty), 181KG (Full)
LxWxH	876x559x940 mm

WL hoist

Weight	61KG (Empty), 98 KG (loaded)
LxWxH	660x406x365 mm

Rod clamp

Hydraulic pumb	Triplex Plunger, 69 bar
Weight	59 KG
LxWxH	914x533x286 mm

Mud pump (optional)

Power	Triplex Plunger hydraulic pump
Flow and pressure	80 Lpm, 69 bar
Weight	59 KG
LxWxH	914x553x286 mm

Water supply unit (optional)

Power	Kohler diesel, 7.3 KW
Flow and Pressure	102 Lpm, 60 bar
Weight	100 KG
LxWxH	914x553x679 mm

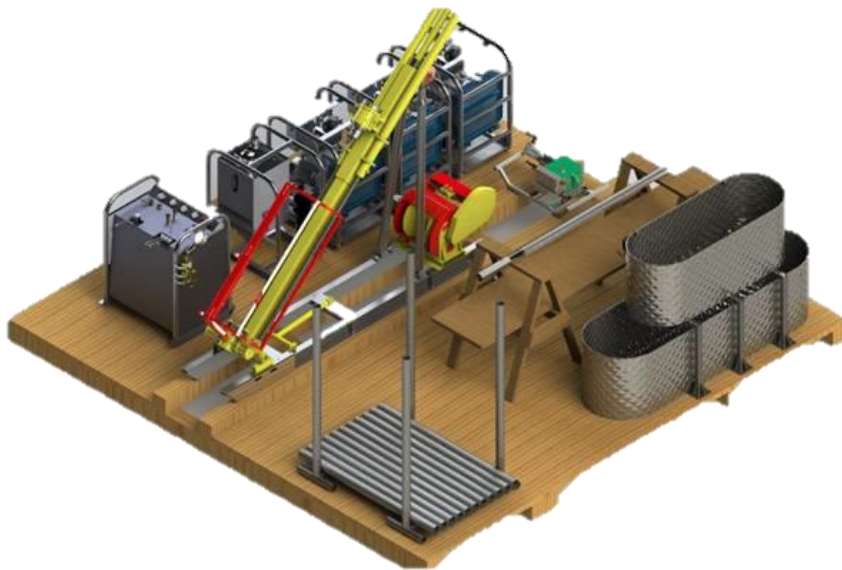
Drilling Tool Selection

With AMMECO TW series of thin-wall drill rods, the F600 drill can give full performance to the advantages offering increased drilling efficiency, larger core diameters, and higher recovery rate.

Rod	O.D. (mm)	I.D. (mm)	Weight (kg/3m)	Weight (kg/1.5m)	Drill bit O.D. (mm)	Drill bit I.D. (mm)
BQ	55.58	45.97	19.05	9.53	59.94	36.37
NQ	69.85	60.45	23.77	11.89	75.69	47.63
HQ	88.9	77.72	34.88	17.44	96.06	63.5
PQ	114.3	101.6	53.07	26.54	122.61	84.96
BTW	56.64	48.51	15.65	7.83	59.94	41.78
NTW	73.15	64.26	22.91	11.46	75.69	56.01
HTW	90.93	81.53	30.75	15.38	96.06	70.92

Drilling Rig Installation

The F600 drill can operate within a 4mx4m working area. Measures of installation and positioning can be decided according to specific site conditions. It is suggested to use a standardized wooden work platform, which is simple and practical. It helps to optimize the workflow and provide a clean and orderly drill site environment.



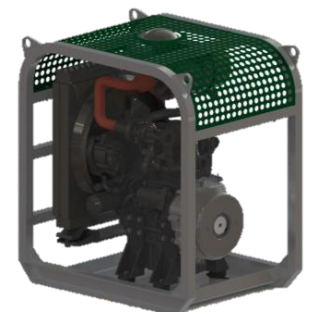
Control panel



Hydraulic Tank



Power Unit



Mud Tank





Ammeco Exploration Equipment & Services

A-1311 Jinhai Fortune Business Center, No.21 Guanggu Rd,

Beijing, China

Tel: 86-10-59574810

Fax: 86-10-59574989

www.ammeco.com

Partner of advanced drilling solutions